

MANDATORY DISCLOSURE

Academic Year: 2017-18

I. NAME OF THE INSTITUTION

Vidya Pratishthan's Polytechnic College

Vidyanagari, Indapur, Dist - Pune.

PIN 413106.

Tele phone: +91-2111-225600

Web site: www.vppolytechnic.org

E-mail: vppci@vidyapratishthan.com

DTE INSTITUTION CODE: D-6445

MSBTE INSTITUTION CODE: 1110

II. NAME & ADDRESS OF THE PRINCIPAL

Shri. Prasad Ramakant Khatawkar

Principal

Vidya Pratishthan's Polytechnic College

Vidyanagari, Indapur, Dist.- Pune. PIN 413106

Tele phone: +91-2111-225600, 225700

Web site: www.vppolytechnic.org

E-mail: info@vppolytechinc.org

III. GOVERNING BODY: (GB)

Members of the Board and their brief background - Governing Board is called Managing Committee in the Institution.

Name

Designation

1. Hon'ble Sharadchandra Govindrao Pawar:

President

Profile:

An outstanding national level political leader, a ground-root social worker. He has been Chief Minister of Maharashtra for four times, Defense Minister of India; Leader of opposition in Parliament, Vice Chairman, National Committee on Disaster Management. He started an educational society Vidya Pratishthan in 1972 creating excellent institutions with world-class infrastructure and excellent academic culture. He has been awarded "Outstanding Parliamentarian Award, 2003" by President Smt. Pratibha Devisingh Patil; Honorary Doctoral Degree in Humanities by Lawrence Technological University, Southfield, Michigan, Detroit, U.S.A. A book titled "*Fast Forward*" - a collection of his speeches released by Hon'ble Prime Minister of India in 2008. Formerly, worked as Agriculture and food Minister of India; Chairman Asian Federation of Kabaddi Association. He has served as the Chairman of the Board of Control for Cricket in India from 2005 to 2008 and as the president of the International Cricket Council from 2010 to 2012. On 17 June 2015, he is re-elected as president of the *Mumbai Cricket Association*, a position he held from 2001 to 2010 and in 2012. He has initiated rural development in Baramati during the early years of eighth decade of last century. He has started many water management projects and other development activities, which culminated into a role model of rural development of India.

2. Shri. Ashokrao Vasudev Prabhune	Vice-President
3. Shri. Dattatraya Rajaram Unde	Secretary
4. Shri. Ramnik Ramaji Mota	Treasurer
5. Hon. Ajit Anantrao Pawar	Trustee
6. Hon. Sou. Supriya Sadanand Sule	Trustee
7. Hon. Sou. Sunetra Ajit Pawar	Trustee
8. Hon. Shri. Vitthal B. Maniyar	Trustee
9. Shri. Balasaheb Patil Taware	Member
10. Shri. Shrikant Murlidhar Sikachi	Member
11. Hon. Adv. Neelima Vinodkumar Gujar	Member
12. Hon. Dr. Rajeev Motilal Shah	Member

➤ **Members of Academic Advisory Body**

Chairman: Shri. Sharad Kulkarni

Members: Shri. Sharadchandra Pawar, President - Vidya Pratishthan, Baramati

Shri. Prabhune, Vice- President - Vidya Pratishthan, Baramati

Shri. Ashank Desai, Chairman & MD - Mastek Ltd., Mumbai

Shri. Harish Mehta, Chairman & MD - Onward Group, Mumbai

Shri. Sharad Godbole, Consultant

Shri. Deepak Ghaisas, CEO - I-Flex Solutions Ltd., Mumbai

Shri.V. K. Magapu, CEO - L & T, I T Mumbai

Shri. Achyut Godbole, MD - Concio Technologies, Mumbai

Shri. Aroon Joshi, Director - Aroon Joshi & Associates, Pune

Shri. Pratap Pawar, MD - Sakal Papers Ltd., Pune

Shri. Anand Khandekar, Director - Cradle Technologies, India

Shri. Mandar Agashe, Chairman - Codito, Pune

Ms. Priya Hiranandani, CEO - Zenta Technology Pvt. Ltd., Mumbai

Ms. Seema Malhotra, Chairperson - Weikfield Mnemonix Infonetworks Pvt. Pune

Mr. Manoj Tirodkar, Vice Chairman - Global Tele-Systems Ltd., Mumbai.

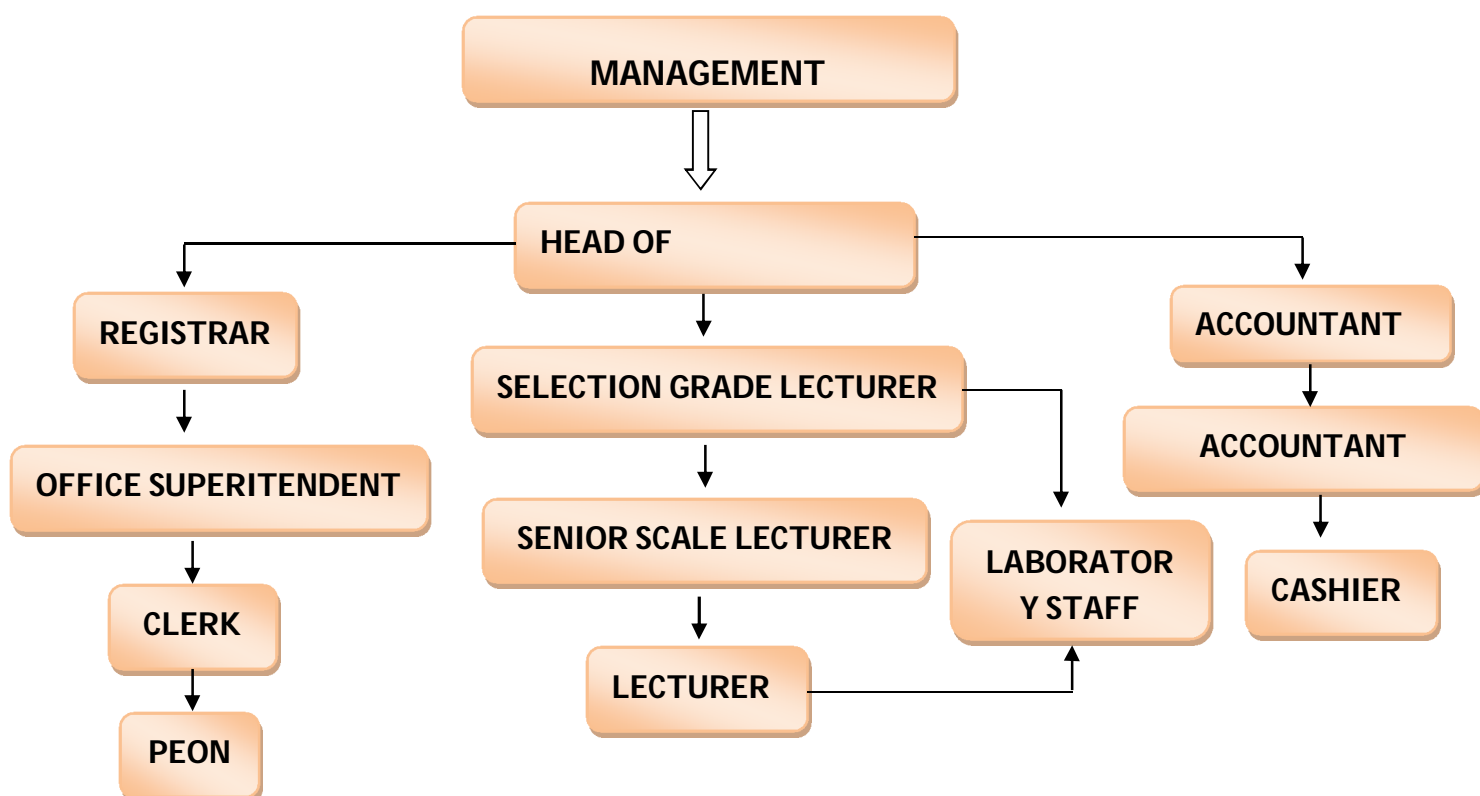
Shri. Sadanand Sule, Director Visio –IT Education Pvt. Ltd. Chairman

Dr. Amol C. Goje, Director - V.I.I.T., Baramati.

➤ **Frequency of the Board Meetings and Academic Advisory Body:**

Board meetings are held every month, the Academic Advisory body meeting is held once in a year as per the convenience of the President.

➤ **Organizational chart and processes**



➤ **Nature and Extent of involvement of faculty and students in academic affairs / improvements:**

Principal is the chief executive of the College. He manages college activities through academic coordinator and different heads of departments, Registrar and Accountant. The academic function is managed through the Heads, Lecturers. The Librarian manages library with the coordination of HODs, staffs and accountant. The purchases of equipments and consumables are done as per budget provisions with the help of store and accounts.

At the commencement of every term/semester, an academic planning is done in a staff meeting to decide the course of activities and policies for the term to achieve academic improvements and excellence and ethical standards. A feedback from students about their faculty is taken once every year and the performance

of the staff is assessed accordingly as one of the elements of staff assessment. The Management committee reviews the monthly activities through its meetings and gives directions about the policies and purchases for further actions. The management decides the budget for the ensuing year. Annual general meeting of the society is held once in year where the review of all institutes is taken and the decisions for the next year plans are taken.

➤ **Nature and Extent of involvement of faculty and students in academic affairs improvements:**

The improvement of faculty is a continuous activity where the faculty is encouraged to attend various workshops, training programs, seminars, conferences, and in-house meetings. The faculty is encouraged to improve their academic qualifications with sponsorship from college. Staff members are also encouraged for writing technical papers articles in journals. Various personality development programs are arranged in the college by inviting experts. Students are given input to improve learning abilities, memory techniques and enhancement of reading speed. Various experts are invited for workshops on techniques.

➤ **Mechanism/Norms & Procedure for democratic/good Governance:**

The college activities are managed through multiple group thinking on day to day issues and policies are decided based on past experience, improvements in view and directives of DTE / AICTE or Management. Staff contributes their views and a conscience decision is taken which is followed as policy by all concerned. Student meetings are conducted with principal to decide the policies and procedures for student's activities, sports, gatherings etc. The staff meetings are held once in a month whereas the HODs and Principal meet every week. The library works through the Library Committee of which Principal is Post facto Chairman. One student council member represents each department on this committee.

➤ **Student Feedback on Institutional Governance/faculty performance:**

Every semester student feedback on faculty and institution is taken. The feedback is assessed and reviewed by Principal, HOD and concerned staff. Steps are taken to improve the situation. Follow up is done by HODs. This feedback mechanism has helped to improve the image of the college in the eyes of the students and parents.

➤ **Grievance redressal mechanism for faculty, staff and students:**

The grievances of the students are settled through the concerned head of the department, staff and student along with the parent if needed. The common matters are discussed in the discipline committee meeting and agreeable solutions are decided as policy for the college working and presented to them managing committee for approval. Serious misdeeds are handled as per DTE/MSBTE act and procedure by the management.

➤ **PROGRAMMES**

Name of the Programmes approved by the AICTE

Sr. No.	Name of Course	Sanctioned Intake
1	Automobile Engineering	60
2	Electronics & Telecom. Engineering	60
3	Computer Engineering	60
4	Mechanical Engineering	60
5	Civil Engineering	60

➤ **For each Programme the following details are to be given:**

Name	Number of Seats	Duration	Fees	Placement Facility
Automobile Engineering	60	3 Years	31000 /-	Available
Civil Engineering	60	3 Years	31000 /-	
Computer Engineering	60	3 Years	31000 /-	
Electronics & Telecom. Engineering	60	3 Years	31000 /-	
Mechanical Engineering	60	3 Years	31000 /-	

V. PROFILE OF PRINCIPAL WITH QUALIFICATIONS:

Name of the Principal: Prof. Khatawkar Prasad R.

Qualification: M.E. (Electronics), MBA

**Academic Co-coordinator:**

Mr.Kulkarni M.D.

Qualification: M. E.(Mech) B.E.(Prod)



VI. FEE

- Details of fee, as approved by State fee Committee, for the Institution. –**Rs. 31000** /-for all courses.
- Time schedule for payment offer for the entire program –**At the time of admission**
- No. of Fee waivers granted with amount and name of students. - **Nil**.
- Number of scholarship offered by the institute, duration and amount

All scholarships are applicable under various schemes of Govt. of Maharashtra.

- Criteria for fee waivers/scholarship- **As laid down by the Govt.**
- Estimated cost of boarding and Lodging in Hostels.

Hostel for Girls: **Rs 14,700/-** per annum + **2000** Deposit and Mess charges: **Rs.1,750/-**per month.

Hostel for Boys: **Rs 14,700/-** per annum + **2000** Deposit and Mess charges: **Rs.2,000/-**per month

VII. ADMISSION:

Name	Number of Seats sanctioned	Number of seats admitted in A.Y. 2017-18
Automobile Engineering	60	07
Civil Engineering	60	32
Computer Engineering	60	26
Electronics & Telecom. Engineering	60	05
Mechanical Engineering	60	23

VIII. ADMISSION PROCEDURE:

The institute follows the procedures, rules & regulations laid down by The Directorate of Technical Education, Maharashtra from time to time. For detailed information please log on to www.dte.org.in.

IX. APPLICATION FORM:

Application form is available in the institute whenever admission process will start every academic year.

X. LIST OF ADMITEES:

VIDYA PRATISHTHAN'S
POLYTECHNIC COLLEGE, VIDYANAGARI, INDAPUR
ADMITTED MERIT LIST OF CANDIDATE OF DIPLOMA COURSE FOR THE FIRST YEAR
2017-18

Name of Course: AUTOMOBILE ENGINEERING

Sr. No.	Merit No.	Merit Marks	Name of Student	Gender	Seat Type	Category
1	61804	55	GAIKWAD MAHESH DATTATRAYA	Male	NGOPENH	SC
2	48116	64.8	HINGASE MAYUR RAMCHANDRA	Male	NGOPENH	NT 2 (NT-C)
3	59262	57.2	JAWAHIRE RAJAN KAMLAKAR	Male	NGOPENH	SC
4	56373	60	KADALE PANKAJ BALASAHEB	Male	NGOPENH	Open
5	64463	52.2	KASBE LAXMAN BAPU	Male	TGOPENH	Open
6	43032	67.8	MADANE VISHAL KAKASO	Male	NGOPENH	Open
7	19815	80	MANE MAHESH DATTATRAY	Male	NGOPENH	Open

Name of Course: CIVIL ENGINEERING

Sr. No.	Merit No.	Merit Marks	Name of Student	Gender	Seat Type	Category
1	32819	73.2	BADGUJAR VISHAL KAILAS	Male	NGOPENH	Open
2	26956	76.2	BANSODE KSHITIJ SIDRAM	Male	NGOPENO	SC
3	12164	84	BARGE SNEHAL RAMESH	Female	NLOPENO	Open
4	8	52.6	BHOSALE KRANTISINH EKNATH	Male	ACAP	Open
5	23969	77.8	CHAVAN VIKRAM ASHOK	Male	NGOPENO	Open
6	54453	60.8	DHEPE ADITYA PANJABRAO	Male	NGOPENO	Open
7	29435	75	DIGVIJAY SUNIL GAIKWAD	Male	NLOPENH	Open
8	51751	62.6	GAIKWAD GANESH MALHARI	Male	NGOPENH	Open
9	58983	57.4	GANDALE VEDANT KALIDAS	Male	TGOPENH	Open
10	26518	76.6	GARGADE SANKET SIDHESHWAR	Male	NGOPENH	NT 2 (NT-C)
11	20149	79.8	JADHAV AISHWARYA ANIL	Female	NLOPENO	Open
12	40362	69.4	JADHAV SAKSHI SHAHAJI	Female	NLOPENH	SC
13	64153	52.6	JAGTAP YOGESH TUKARAM	Male	NGNT30	Open
14	2	82.6	MADANE ANURAG VIJAYANAND	Male	ACAP	NT 2 (NT-C)
15	58605	57.8	MAKHARE PRAJAKTA PRAMOD	Female	NLOPENH	SC
16	33744	72.8	MASAL ANIKET NAMDEO	Male	NGOPENH	NT 2 (NT-C)
17	55408	60.2	NAGARE HANUMANT BAPU	Male	NGOPENO	Open
18	39631	69.8	NALAWADE SATYAJIT ANIL	Male	NGOPENH	Open
19	16737	81.6	NALE ANJALI NAGANATH	Female	NLOPENH	Open
20	25100	77.2	PARBAT SHIVPRASAD BALASAHEB	Male	NGOPENO	Open
21	44134	67.2	PATALE YASH SAMBHAJI	Male	NGOPENH	Open
22	44027	67.2	PAWAR VIRAJ VILAS	Male	NGOPENH	Open
23	34734	72.2	RANANAVARE GAURAV BAPUSO	Male	NGOPENO	Open
24	50779	63.2	SANGADE VALLABH BHARAT	Male	NLSCO	Open
25	18141	80.8	SAVALKAR PRASHANT VISHNUPANT	Male	NGOPENH	NT 2 (NT-C)
26	6	56.8	SAYYAD MUSKAN MAHEMUD	Female	ACAP	Open
27	7	56.2	SHITOLE SAHIL MACHHINDRA	Male	ACAP	Open
28	42855	68	TAMBOLI NIYAJAHEMAD RAHIMAN	Male	NGOPENH	Open
29	57089	59	VARKAD SURESH RAMRAO	Male	NGSTO	Open
30	3549	90	DOKE SHIVANI SUNIL	Female	TFWS	Open
31	10618	84.8	MANE JANHAVI MANOJ	Female	TFWS	DT/VJ

32	3928	89.6	NALE VAISHNAVI VAIJINATH	Female	TFWS	OBC
----	------	------	--------------------------	--------	------	-----

Name of Course: COMPUTER ENGINEERING

Sr. No.	Merit No.	Merit Marks	Name of Student	Gender	Seat Type	Category
1	40613	69.2	BAGAL SHRIKRUSHNA SUHAS	Male	NGOPENH	Open
2	20227	79.8	BAGRECHA SEJAL PARASMAL	Female	NLOPENH	Open
3	26224	76.6	CHAVAN PRAVIN AJINATH	Male	NGOPENH	Open
4	30302	74.6	CHAVAN PRITI PANDHARI	Female	NLOPENH	Open
5	20788	79.4	CHAVAN VAISHNAVI SHANTARAM	Female	NLOPENH	OBC
6	51890	62.6	GAIKWAD AARTI ARJUN	Female	NGOPENO	Open
7	33541	72.8	GAIKWAD ALISHA LAXMAN	Female	NLOPENH	DT/VJ
8	1	85	GAVALI CHAITRALI NARHARI	Female	ACAP	OBC
9	38154	70.6	GEND SANDESH SHARAD	Male	NGOPENH	Open
10	39466	69.8	GHODAKE ROHAN MACHHINDRA	Male	NGOPENH	Open
11	20885	79.4	GIRME PRUTHVIRAJ HEMANT	Male	NGOPENO	Open
12	13861	83	GORE SHUBHAM ANNA	Male	NGOPENH	Open
13	14341	82.8	HANJAGIKAR PRATIK SANJAY	Male	NGOPENH	SBC
14	21105	79.4	JADHAV AJIT SUDHAKAR	Male	NGOPENH	Open
15	44383	67	KALBHOR SAKSHI ARJUN	Female	NGOPENH	Open
16	7249	87	KAMBLE MANISHA ARUN	Female	NLOPENH	SC
17	45131	66.6	KAMBLE VISHAL RAJKUMAR	Male	TGOPENH	SC
18	38129	70.6	KHARADE MAYUR SANTOSH	Male	NGOPENH	OBC
19	40918	69	KULKARNI KAUSTUBH NITIN	Male	NGOPENO	Open
20	3	78.4	MISAL NIKITA VIKRAM	Female	ACAP	Open
21	31848	73.8	PARADE ARPITA PANDIT	Female	NLOPENH	Open
22	47393	65.4	PASAGE SAREEKA MOHAN	Female	NLOPENH	Open
23	28747	75.4	PAWAR SOHAM SAMADHAN	Male	NGOPENO	Open
24	36930	71.2	WAGHMODE AVINASH CHANDRKANT	Male	NGOPENH	NT 1 (NT-B)
25	10769	84.8	ADSUL DHANASHRI MOHAN	Female	TFWS	Open
26	13442	83.2	SURYAVANSHI SARITA JAGANNATH	Female	TFWS	Open

Name of Course: ELECTRONICS & TELECOMMUNICATIONS ENGINEERING

Sr. No.	Merit No.	Merit Marks	Name of Student	Gender	Seat Type	Category
1	37664	70.8	BHONG HARSHAD HANUMANT	Male	NGOPENH	OBC
2	13053	83.4	KHATAKE DNYANESHWAR RAVINDRA	Male	NGOPENH	Open
3	56210	60	MOTE SUJIT SHIVAJI	Male	NGOPENH	Open
4	37029	71.2	SHINDE PRATIK SHAHAJI	Male	NGOPENH	Open
5	5000	88.8	ZAGADE POOJA RAMDAS	Female	NLOPENH	OBC

Name of Course: MECHANICAL ENGINEERING

Sr. No.	Merit No.	Merit Marks	Name of Student	Gender	Seat Type	Category
1	39079	70	BHOSALE ROHIT DATTATRAYA	Male	NGOPENH	SC
2	57946	58.4	DHAINJE SUMIT PRADIP	Male	NGOPENO	SC
3	35937	71.6	EKATPURE ADITYA NILESH	Male	NGOPENO	OBC
4	37879	70.6	INGWALE GANESH SHIVAJI	Male	NGOPENH	Open
5	26721	76.4	JADHAV BHIMRAO HANUMANT	Male	NGOPENH	SC
6	47690	65.2	KUMBHAR KAUSHAL SURESH	Male	NLOPENH	Open
7	37671	70.8	KUMBHAR VISHAL SURESH	Male	NLOPENH	Open
8	62825	54	MANE DESHMUKH OM RAJENDRA	Male	NLOPENH	Open

9	37343	71	MANE SANKET HEMANT	Male	NGOPENH	SC
10	4	77.6	MANE SHUBHADA VASANT	Female	ACAP	Open
11	53804	61.4	MORE RAHUL POPAT	Male	NGOPENO	SC
12	5	70.2	RAUT SIDDHANT SANTOSH	Male	ACAP	OBC
13	60887	55.8	SHENDKAR RANJIT RAJKUMAR	Male	NGOPENH	Open
14	17957	80.8	SHEWALE RITESH RAJU	Male	NGOPENH	SC
15	35323	72	SHINDE SAMARTH DINESH	Male	NGOPENH	SC
16	18929	80.4	SHINDE SAVATA VITTHAL	Male	NGOPENH	Open
17	49922	63.8	SHINGADE PANDURANG MOHAN	Male	TGOPENH	NT 2 (NT-C)
18	42016	68.4	SONAVANE KARAN MANOJ	Male	NGOPENO	SC
19	69905	43.6	SONAWANE VRUSHABH ASHOK	Male	NGOPENO	SC
20	42096	68.4	WAGHMODE VISHVJIT SATISH	Male	NGNT2H	NT 2 (NT-C)
21	13715	83	GAVALI SAGAR PRADIP	Male	TFWS	OBC
22	10212	85.2	NIMBALKAR PRUTHVIRAJ DHANANJAY	Male	TFWS	Open
23	7915	86.6	PAWAR SUMIT SACHIN	Male	TFWS	Open

XI. INFRASTRUCTURE AND RESOURCES AVAILABLE:

LIBRARY:

- A) Total area of the library - **544 Sq. meter.**
- B) Seating capacity of the library - **128 seats.**
- C) Working hours of library: - **09:00 am to 05:00 pm.**
- D) Library Automation.
- E) Book Bank facility available for SC students from Dept. of Social Welfare Govt. Of Maharashtra.
- F) Online yearly subscription of British Library (www.onlinelibrarybritishcouncil.co.in)
- G) Inter Library Loan Facility.
- H) Job Alert Notifications displayed on notice Board for students from Employment News.
- I) Overnight Reading Room facility during examination period.
- J) **Best Library User Award** for every academic year.
- K) Total Investment as on today: **20,05,801/-**

- **Details of the Library:**

Sr. No.	Course	Number of titles	Number of volumes	No. of National Journals
1	AE	215	1079	3
2	CE	249	963	3
3	CO	360	2456	3
4	EJ	319	2308	3
5	ME	225	1118	3

- **Laboratories:**

Sr. No.	Name of Course	Name of Laboratory	Total Area of Lab in Sq. M.	Total Cost (Rs.)
1	Common for All branches for First year (AE,CE,CO,EJ & ME)	APPLIED PHYSICS	75.04	639644
		APPLIED CHEMISTRY	75.04	1237417

		LANGUAGE LAB	66.50	576125
2	Automobile Engg.	AUTOMOBILE SYSTEM LAB	66	224324
		AUTOMOBILE ENGINE LAB	66	1081999
		AUTOMOBILE ELECTRICAL & ELECTRONICS LAB	66.66	74256
		AUTOMOBILE WORKSHOP	66	64284
		ENVIRONMENTAL POLLUTION CONTROL	66	194860
		CAD/CAM LAB	24	552000
3	Civil Engg.	STRENGTH OF MATERIAL	66	936058
		SURVEYING	66	568201
		GEOTECHNICAL ENGG. LAB	68	303481
		ENGG. MECHANICS LAB	68	78651
		CONCRETE TECHNOLOGY LAB	66	802723
		COMPUTER LAB	66.40	580000
		ENVIRONMENTAL LAB	66	87075
		HYDRAULICS LAB	66	51161
4	Computer Engg.	HARDWARE LAB	66.40	Donated
		SOFTWARE TESTING LAB	66.30	1005911
		NETWORK LAB	66.30	979251
		PROGRAMMING LAB	66	745500
		LINUX LAB	66.40	515855
		DATABASE LAB	66.00	816106
5	Electronics & Tele-Communication Engineering	COMMUNICATION LAB	66.40	901383
		ELECTRICAL LAB	76.00	798993
		ELECTRONICS WORKSHOP	66	167635
		COMPUTER CENTER & HARDWARE LAB	66	739766
		ANALOG ELECTRONICS LAB	66	582019
		DIGITAL & MICROCONTROLLER LAB	66	134517
		MEASUREMENT & CONTROL LAB	66	485853
		ADVANCE COMMUNICATION LAB	66.6	103036
6	Mechanical Engineering	MACHINE SHOP	66	6121667
		AUTOMATION LAB	66	1853454
		MMC LAB	66	55900
		CAD/CAM LAB	66.40	617240
		TOM LAB	70.88	146250
		POWER LAB	102.20	276942
		FMM LAB	70	600187
		MQC LAB	80	356085

➤ Detailed Equipment list of respective Laboratory:

1. Applied Physics Lab:

Sr. No.	List of Equipments
1	Flat spiral spring
2	Compound bar pendulum
3	Knife edge for bar pendulum
4	Bunsen's photometer
5	Luminous bodies of two different luminous intensities
6	Portable decibel meter
7	Joules calorimeter
8	Ammeters of ranges 0-100 mA
9	0-100 microampere, 0-2 ampere
10	0-5 ampere, 0-50 ampere

11	Connecting wires
12	Plano convex lens of large radius of curvature of the order of 100 cm
13	Short focus convex lens (15 to 20 cm)
14	Optically plane glass plates
15	Table lamp
16	Magnetic needle
17	Spectrometer
18	Portable spray cans of penetrant
19	Searle's apparatus for determination of thermal conductivity
20	Steam chamber
21	Dimmer stat
22	Capacitors (60-80 mF)
23	Voltmeter (0-200 V)
24	Flat condenser plates
25	Small polythene spacers about 1mm thick
26	Reed switch
27	Signal generator with low output impedance
28	Protective resistor (R = 100 k ohm)
29	Platinum resistance thermometer
30	p-n junction diode kit to study I-V characteristics.
31	Galvanometer
32	Resistance box
33	Potentiometer with jockey
34	Kit to measure the numerical aperture of the plastic fiber using 660 nm wavelength LED.
35	Micrometer Screw Gauge
36	Pullinger Apparatus
37	Vernier caliper
38	Young's modulus
39	Capillaries of different bore
40	Stokes apparatus
41	He-Ne Laser
42	Digital multimeter
43	Regulated power supply
44	Rheostat
45	Thermometer
46	Boyles law
47	Heater
48	Thermocouple
49	Glass Slab
50	Slotted weight
51	Sodium lamp
52	Mercury lamp
53	Newton's ring Apparatus
54	Sonometer with tuning fork

2. Applied Chemistry Lab:

Sr. No.	List of Equipments
1	Periodic Table Chart
2	Contech Electronic Balance(0.001to 120 g)
3	Digital Conductivity Meter,(Global Make) With Cell
4	Electric Oven(18" X 18" X 18")
5	Distilled Water Plant (Elect) 6 Ltr Cap
6	Analytical weight box (with work certificate) 1mg to 100gm
7	Battery eliminator 2 To 12 Volt

8	Beaker 250 ml (Borosil)
9	Beaker 500 ml (Borosil)
10	10 Beaker Polythene 1000 ml
11	Beakers 50 ml
12	Beakers 100 ml
13	Burette Clamp fischer type, dia pressed made of M.S. Power Coated for 1 burette with bosshead
14	Burette Stand with clamp and bosshead
15	Burette with Pinch Cock 25 ml Borosil
16	China Dish 3"
17	Clay Pipe Triangle
18	Conical flask 100ml
19	Conical Flasks 250 ml (Borosil)
20	Copper Plate for Faraday's Pt Law ECE
21	Copper wires for connection
22	Crucible with Lid 3" (Porcelain)
23	Drier Hot & Cold (Philips)
24	Dropper with Latex
25	Filter Paper
26	Flat Bottom Flask 1000 ml (Borosil)
27	Flat Bottom Flask 2000 ml (Borosil)
28	Flat Bottom Flask 5000 ml (Borosil)
29	Funnel 4" Long Stem (Borosil)
30	Glass Rod
31	Glass Tube App. 0.2mm inner Diameter
32	Glass Tube App. 0.5 mm inner Diameter
33	Indicator Bottles 25 ml (Polythene)
34	Kipps Appartus 1 Lit (Borosil)
35	Magnetic Stirrer 1000 ml with hotplate
36	Measuring Cylinder 10 ml (Borosil)
37	Measuring Cylinder 100 ml (Borosil)
38	Measuring Cylinder 1000 ml (Borosil)
39	Metal Blow Pipe
40	One way key
41	Ostwalds Viscometer 25 ml (Borosil)
42	Pair of Tongs
43	Pipette 10 ml
44	Pipette 5 ml
45	Plastic Can(5 Lit.)
46	Plastic Tray
47	Polish Papers
48	Reagent Bottles 250 ml
49	Reagent Bottles 250 ml (Amber Coloured)
50	Reagent Bottles with wide mouth
51	Reagents Bottles 1000 ml
52	Reagents Bottles 250 ml
53	Rheostat (8")
54	Rubber tubing for burette 6mm
55	Rubber tubing for water steel 6mm
56	Spattula 6" Steel
57	Stop Watch Electronic (Racer)
58	Test Tube Brush
59	Test Tube Holder
60	Test Tube Stand (Polythene)
61	Test tube with rim 15 x 125 mm(Borosil)
62	Thermometer (0 to 110)

63	Thermometer (0 to 360)
64	Tripod Stand (Metal)
65	Volumetric flask 100 ml
66	Volumetric flask 1000 ml
67	Volumetric flask 250 ml
68	Volumetric flask 500 ml
69	Volumetric Pipette 25 ml (Borosil)
70	Watch glass(1.3")
71	White Apron (36")
72	White Apron (38")
73	Wire Guaze with frame

• **Chemicals:**

Sr. No.	List of Chemicals
1	Acetic Acid (Glacial)
2	Ammonium Chloride
3	Ammonium Carbonate
4	Ammonium thiocyanate
5	Ammonium Acetate
6	Ammonium Oxalate
7	Ammonia(Liquor) 25%
8	Aluminium Chloride
9	Aluminium Nitrate
10	Acetone
11	Barium Nitrate
12	Bromine Water
13	Barium Sulphate
14	Barium Chloride
15	Blue Litmus Paper Grannuals
16	Blue Litmus Paper
17	Calcium sulpahte
18	Chloroform
19	Chlorine Water
20	Copper Filings
21	Copper Sulphate
22	Copper Chloride(Cupric)
23	Chromium Nitrate
24	Chromium Chloride
25	Calcium Carbonate
26	Cobalt Chloride
27	Cobalt Nitrite
28	Carbon Tetrachloride
29	Dimethyl Glyoxime
30	Ethyl Alcohol
31	Ferrous Sulphate
32	Ferric Chloride
33	Ferrous Sulphide
34	Ferric Sulphate
35	Formaldehyde
36	Grease
37	Hydrochloric Acid
38	Iodine
39	Lead Oxide
40	Lead Acetate
41	Lead Chloride
42	Lead Sulphate

43	Litmus Paper (Red)
44	Litmus Paper Red Grannuals
45	Mercuric Chloride
46	Mercurious Chloride
47	Manganese Dioxide
48	Magnesium Sulphate
49	Magnesium Chloride
50	Nitric Acid
51	Nickel Chloride
52	Nickel Nitrate
53	Nickel Sulphate
54	Potassium Chromate
55	Potassium Iodide
56	Potassium Dichromate
57	Potassium Hydroxide(Flakes)
58	Potassium Ferrocynate
59	Potassium Ferricynate
60	Potassium Permanganate(Crystals)
61	Perchloric Acid
62	Picric Acid
63	Phenolphthalein
64	Potassium Chloride
65	Potassium Bromide
66	Potassium Pyroantimonate
67	Phenol
68	PH Paper
69	Sodium Hypophosphite
70	Silver Nitrate(A.R.)
71	Sodium Cobaltinitrite
72	Sodium Hydroxide (Flakes)
73	Sodium Carbonate
74	Sulphuric acid
75	Sodium Chloride
76	Sodium Azide
77	Sodium Thiosulphate
78	Starch Powder
79	Starch Paper
80	Starch Iodide Paper
81	Zinc Sulphate
82	Universal indicator
83	Ferrous alloy
84	Brass alloy
85	Agar powder
86	oil paint
87	Lubricant oil

3. Language Lab:

Sr. No.	List of Equipments/items
1	Dell OptiPlex PC (21)
2	Wordsworth language Lab (Software)
3	Headphone with mike (I-ball)
4	Cd's on spoken English and personality development

4. Audio-Video Room:

Sr. No.	List of Equipments
1	Plasma 32" LCD TV
2	Sound system
3	Dell OptiPlex PC

5. Automobile System lab:

Sr. No.	List of Equipments
1	Two Wheeler 4S (Fiero F2)
2	Scooter (Bajaj)
3	Cut section model of Synchronous Gear box
4	Cut section model of Sliding Mesh Gear box
5	Cut section model of Fully Floating Differential & Rear axle mechanism (working)
6	Cut section model of Semi floating Differential & Rear axle mechanism (working)
7	Cut section model of Diaphragm Clutch system (working)
8	Cut section model of Single Plate Coil Spring Clutch System
9	Cut section model of Multiplate Clutch System
10	Cut section model of Centrifugal Clutch
11	Propeller shaft & Universal joint assembly
12	C.V.Joint unit
13	Sliding Mesh Gear box assembly
14	Synchronous(Synchromesh) Gear box assembly Mahindra & Mahindra Jeep assembly
15	Single Plate Clutch (Coil Spring)
16	Cut Section model of steering gear box es
17	Cut section model of hydraulic braking system
18	Torque Convertor
19	Cut section model of disc brake system
20	Four Wheeler Diesel (Primier Padmini 138)

6. AUTOMOBILE ENGINE LAB

Sr. No.	List of Equipments
1	Engine Test Rig
2	Cut section model of two stroke S.I. petrol engine assembly
3	Cut section model of four stroke S.I. petrol engine
4	Model of four stroke Diesel engine cycle
5	2Stroke Petrol Engine assembly Bajaj M50 Engine Assly
6	Demonstration of fuel supply system of a Petrol Engine
7	Demonstration of fuel supply system of a Diesel Engine
8	Cut Section of Mechanical Fuel Pump
9	Cut Section of Carburettors
10	Cut Section of Radiator
11	Cut Section of Water pump
12	Cut Section of I.C.Injector (4 Types)
13	Cut Section of Diesel Filter
14	Cut Section of Gear Lubrication Pump
15	Cut section model of Silencer
16	Valve Valve seat leakage tester
17	Spark plug cleaner & tester
18	Injector (Nozzle) cleaner & tester
19	Model of MPFI Engine
20	Bullet Engine (Scrap)
21	Multicylinder Petrol Engine (Scrap)
22	Engine of Luna (Scrap)

7. AUTOMOBILE ELECTRICAL & ELECTRONICS LAB:

Sr. No.	List of Equipments
1	Battery cell tester
2	Xenon Timing Light For adjustment of ignition timing

3	Cut Section model of Dynamo
4	Cut Section model of Ignition Coil
5	Cut Section model of Alkaline Battery
6	Demonstration of Electrical Wiring System in 4Wheeler
7	Battery Load tester
8	Demonstration of Electrical Wiring System in 2Wheeler

8. AUTOMOBILE WORKSHOP:

Sr. No.	List of Equipments
1	Demonstration Board Of Air Conditioning System
2	Pneumatic Tools for Automobile Maintenance
3	Solar Cooker

9. ENVIRONMENTAL POLLUTION CONTROL:

Sr. No.	List of Equipments
1	Exhaust Gas Analyzer Five Gas analyzer
2	Turbidity Tester of water sample
3	Noise Tester

10. CAD/CAM LAB:

Sr. No.	List of Equipments
1	Computers 24 Nos.

11. STRENGTH OF MATERIAL LAB:

Sr. No.	List of Equipments
1	Universal Testing Machine 100 T Capacity
2	Shear Test Attachment
3	Brinell Hardness Test Attachment
4	Extensometer (Mechanical Type)
5	Rockwell Hardness Tester Model UMIROK
6	Brinell Hardness Tester Model UMIB 3000
7	Impact Testing Machine Model

12. SURVEYING:

Sr. No.	List of Equipments
1	Telescopic Alidade
2	measuring chains 30m ,150 links with brass handles & 10 arrows
3	Measuring chain 20m,150links with brass handles & 10 arrows
4	Plumb Bob
5	Optical square brass reflector type
6	Placom digital planimeter (model kp90n)
7	Surveyor Compass with stand
8	Plane table 22mm thk with stand and all accessories
9	ARROWS
10	STEEL TAPE 30M
11	RANGING RODS
12	PRISMATIC COMPASS WITH STAND
13	DUMPY LEVEL
14	ALUMINIUM STAFF 4M
15	ALUMINIUM STAFF 5M
16	ALUMINIUM STAFF 6M
17	AUTOMATIC LEVEL (PENTAX MODEL AP241WITH STAND)
18	CROSS STAFF ALUMINIUM WITH POLE
19	TILTING LEVEL WITH STAND
20	STANDARD VERNIER THEODOLITE WITH STAND
21	MICRO OPTIC ONE SECOND THEODOLITE LMT1 WITH THREE GROOVED
22	ELECTRONIC THEODOLITE MODEL LETA2 WITH COMENSATOR
23	Standard Vernier Theodolite
24	Polar Planimeter

13. GEOTECHNICAL ENGG. LAB:

Sr. No.	List of Equipments
1	Core Cutter 100mm dia x 127.3mm long.
2	Aluminium Sampling Tins with lid: 50mm x 25mm.
3	Aluminium Sampling Tins with lid: 50mm x 50mm
4	Aluminium Sampling Tins with lid: 75mm x 25mm.
5	Aluminium Sampling Tins with lid: 75mm x 50mm
6	Aluminium Sampling Tins with lid: 100mm x 50mm.
7	Hot Air Oven electrically operated, thermostatically controlled, Stainless Steel interior. Temperature range ambient to 250°C. Internal Size: (450x450x450mm) 18"x18"x18"
8	Standard Test Sieves 300mm internal dia made of GI frame as per IS complete of required apertures: 100, 80, 63, 40, 20, 10 & 4.75mm
9	Standard Test Sieves 200mm internal dia made of Brass frame as per IS : 4.75, 2 & 1mm, 600, 425, 300, 212, 150mic
10	Standard Test Sieves 200mm internal dia made of Brass:75mic
11	Lab Electronic Balance 10kg cap acc 0.1gm (100mg)
12	Dolly 25 mm high and 100 mm
13	CoreCutterRammer10kgwith rod.
14	Hydraulic Extractor extracting samples. Supplied complete with 100mm adaptor & 150mm adaptor
15	Equipment for determination of specific gravity for Fine and Coarse Aggregate As Per IS 23861963 (PIII) Pycnometer (1000ml) with Brass Cone.
16	Liquid Limit Device As Per IS 2720 (PV) Electrically Operated fitted with blow counter complete with casangrande grooving tools
17	Set of Grooving Tools for Liquid Limit.
18	Soil Permeability Apparatus As Per IS 2720 (PXVII) for Constant Head / Falling Head
19	Direct Shear Apparatus, Electrically Operated
20	Proctor Compaction apparatus As Per IS 2720 (PVII) consisting of compaction mould 100mm dia x 127.3mm ht (1000cc) complete with collar & base plate (M.S) and rammer 2.6kg x 310mm controlled fall (For Light Compaction).
21	Proctor Compaction apparatus As Per IS 2720 (PVIII) consisting of compaction mould 150mm dia x 127.3mm ht (2250cc) complete with collar & base plate (M.S) and rammer 4.89kg x 457mm controlled fall (For Heavy Compaction)
22	Lab C.B.R. Testing Apparatus :CBR Load Frame with 5 Tons capacity, Electrically cum Manually Operated with 1.25mm/min Speed As Per IS 2720 (Pxvi)
23	Unconfined compression test apparatus complete with Load frame 5 Tons (50kN) capacity Electrically cum Manually Operated
24	Triaxial Cell
25	Sand pouring cylinder As Per IS 2720 (PXXVIII) 100mm diameter with calibrating container and tray
26	Set of Stainless Steel Spatula 100 and 200mm long with wooden handle
27	Gauging Trowel as per IS with wooden handle.
28	Laboratory Vane Shear test apparatus AS PER IS 2720 (PXXX) electrically operated
29	Ground glass plate with rounded edges 450mm x 450mm x 10mm
30	Steel Straight Edge 300mm long with one beveled edge
31	Porcelain Evaporating Dish 125mm dia.
32	Circular Enamel Tray: 300mm dia
33	Posthole Augur 150mm dia with 1 Mtr long extension Rod & 'T' Handle

14. ENGG. MECHANICS LAB:

Sr. No.	List of Equipments
1	Beam Reaction Apparatus
2	Theorem of Moment Apparatus
3	Jib Crane Apparatus
4	Single Purchase Crab
5	Double Purchase Crab
6	Worm & Worm Wheel
7	Differential Axle and Wheel
8	Simple Screw Jack
9	Frictional Apparatus

15. CONCRETE TECHNOLOGY LAB:

Sr. No.	List of Equipments
1	Blaine's Air Permeability Apparatus
2	Sieve shaker gyratory (motorized)
3	Vicat's needle apparatus with dashpot
4	Le chateliers mould
5	Cube moulds 7.07cm cube
6	Cube moulds 150mm cube
7	Cylindrical moulds 150mm x 300mm
8	Vibrating table
9	Lab concrete mixer (motorized)
10	Aggregate impact value apparatus
11	Aggregate crushing value apparatus
12	Los angeles abrasion testing machine
13	Density basket
14	Bulk density measure
15	Slump test apparatus
16	Compacting Factor Apparatus
17	Vibrating Machine
18	Glass measuring cylinder (500ml) capacity
19	Glass measuring cylinder (1000ml) capacity
20	Enamel tray 600mmx450mmx50mm
21	Enamel tray 450mmx300mmx40mm
22	Enamel tray 300mmx250mmx40mm
23	Needle vibrator
24	Compression testing machine 3000KN capacity
25	Test sieve 200mm dia 80mm, 60mm, 40mm, 20mm, 10mm
26	Sieve 300mm dia 4.75, 2.36mm, 1.18mm, 600mic., 300mic., 150mic, lid, pan
27	Sieve 300mm dia 90mic.
28	Sieve 300mm dia 75mic

16. COMPUTER LAB:

Sr. No.	List of Equipments
1	COMPUTERS 25 Nos.

17. ENVIRONMENTAL LAB:

Sr. No.	List of Equipments
1	Digital Turbidimeter Range up to 1000 NTU
2	Jar Test Apparatus
3	COD Reflex Apparatus

18. HYDRAULICS LAB:

Sr. No.	List of Equipments
1	Raynold's Apparatus
2	Notch Apparatus

19. HARDWARE LAB:

Sr. No.	List of Equipments
1	Keyboard
2	Monitor
3	Projector
4	Printer
5	Modem
6	Switch
7	CPU
8	UPS
9	SMPS
10	Motherboard

11	RAM
12	NIC
13	HDD
14	Floppy Drive
15	CD ROM

20. SOFTWARE TESTING LAB:

Sr. No.	List of Equipments
1	PC(Monitor,Keyboard,CPU,Mouse) with Intel Core2Deo CPU E7400@2.80 GHz Processor,2 GB RAM,160 SATA HDD
2	Projector LCD
3	Operator Chairs
4	Laserjet Printer
5	D Link LAN Switch
6	Other Furniture and 2 AC

21. NETWORK LAB:

Sr. No.	List of Equipments
1	PC(Monitor,Keyboard,CPU,Mouse) with Intel Core2Deo CPU E7400@2.80 GHz Processor,2 GB RAM,160 SATA HDD
2	Operator Chairs
3	Printer
4	Switch
5	Other Furniture and 2ACs

22. PROGRAMMING LAB:

Sr. No.	List of Equipments
1	PC(Monitor,Keyboard,CPU,Mouse) with Intel Core2Deo CPU E7400@2.80 GHz Processor,2 GB RAM,160 SATA HDD
2	Operator Chairs
3	Printer
4	DLink LAN Switch
5	Other Furniture and 2ACs

23. LINUX LAB:

Sr. No.	List of Equipments
1	Desk top Pcs
2	HP LJ Printer P1108

24. DATABASE LAB:

Sr. No.	List of Equipments
1	Desktop Optiplex 360
2	Desktop Pcs
3	Switches (1028,24 ports)
4	Desktop Optiplex 330
5	Dot matrix Printer

25. COMMUNICATION LAB:

Sr. No.	List of Equipments
1	PAM Modulation & Demodulation trainer kit
2	PWM Modulation & Demodulation trainer kit
3	PPM Modulation & Demodulation trainer kit
4	PCM Modulation & demodulation trainer kit
5	Delta Modulation & Demodulation trainer kit
6	AM Modulation TRANSMITTER KIT
7	AM Demodulation RECEIVER KIT
8	FM Modulation TRANSMITTER KIT
9	FM Demodulation RECEIVER KIT
10	Data conditioning & carrier modulation KIT
11	Data conditioning & carrier Demodulation KIT

12	PAM TD Multiplexing & Demultiplexing KIT
13	Antenna trainer S1189
14	Frequency Division Mux & Demux
15	GDM394 3 & 1/2 DMM
16	PCM Modem using A & u law
17	DPCM Modem
18	Adapative delta modulation and Demodulation kit
19	Various line coding
20	DPSk modulation and Demodulation
21	QPSK modulation and Demodulation
22	OAM modulation and Demodulation
23	CDMADSSS modulation and Demodulation
24	FHSS modulation and Demodulation
25	Function Generator 3Mhz
26	GDS 1022 GwInstek 25 Mhz DSO
27	Multioutput DC Power Supply

26.ELECTRICAL LAB:

Sr. No.	List of Equipments
1	Transformer 1KVA 230/115V with tappings
2	Transformer 1KVA 230/115V without tappings
3	Tachometer Digi KM-2235B
4	Digi Clamp meter 1000A AC/DC 2781-T True rms
5	Earth resistance tester KM-1520
6	Digi Multimeter 207 MK-1 (T)
7	Analog Insulation Resistance Tester KM-81
8	Digi Insulation Resistance Tester KM- 360
9	DC Ammeter (0-1A)
10	DC Ammeter (0-2.5-5A)
11	DC Ammeter (0-5-10A)
12	DC Ammeter (0-10-20A)
13	DC Voltmeter 0-50V
14	DC Voltmeter 0-150-300V
15	DC Voltmeter 0-250-500V
16	AC Ammeter MI (0-1A)
17	AC Ammeter MI (0-1.5A)
18	AC Ammeter MI (0-2.5A)
19	AC Ammeter MI (0-5A)
20	Ac Voltmeter MI (0-150-300V)
21	Ac Voltmeter MI (0-250-500V)
22	Ac Voltmeter MI (0-150V)
23	Wattameter 0-750W,2.5-5A,250/500V
24	Wattameter 0-1500W,5-10A,300/600V
25	Low Power factor wattmeter 0-1500W,5/10A,250/300/600V
26	Low Power factor wattmeter 0-1500W,5/10A,150/300/600V
27	Rheostat 400 Ω , 1 A
28	Rheostat 100 Ω , 5 A
29	Rheostat 150 Ω , 2 A
30	Rheostat 40 V, 5 A
31	Rheostat 20 Ω , 10 A
32	3-Ph Auto-transformer
33	Rectifier 25KVA
34	Induction Motor (With DOL Starter)
35	D.C. Shunt Machine (With 3 Point Starter)
36	Variable Choke Coil(Inductor)

37	D.C. Series Motor
38	1-Ph, Loading Inductor
39	Variable Capacitor(1 Ph,230V,10Amp)
40	Variable Capacitor(3 Ph,400V,15Amp)
41	3-phase Variable Load(5KW)
42	3-phase Variable Load(10KW)
43	Lamp Bank
44	Dismantled DC Motor
45	Stepper Motor

27. Electronics Workshop:

Sr. No.	List of Equipments
1	PCB coater Cum Photoresist dryer
2	Both side exposur
3	Easily etcher
4	Photo circular Saw
5	Chmicals for machines
6	$\frac{3}{4}$ " Stand Drill make with $\frac{1}{2}$ HP motor with 13mm chuck

28. COMPUTER CENTER & HARDWARE LAB:

Sr. No.	List of Equipments
1	Dell optiplex 330NT intel C20 E4600

29. ANALOG ELECTRONIC LAB:

Sr. No.	List of Equipments
1	GDS 1022 Gw- Instek 25 Mhz DSO
2	GDM 394 3 & 1/2 digit DMM
3	Experiment Board
4	LCR-Q meter
5	Plot Frequency response of FET amplifier kit
6	Plot Frequency response and bandwidth of negative amplifier kit
8	Study function of Colpitts oscillator
9	Study RC phase shift Oscillator
10	Study function of RC integrator and Differentiator
11	Study function of Clipping and Clamping Ckt
12	Study function of Astable Multivibrator
13	Study function of Monostable Multivibrator
14	Study function of UJT relaxation Oscillator
15	Study of regulated power supply
16	Study function of Bistable multivibrator
17	3 & 3/4 Pocket type hand held digital multimeter
18	Multioutput DC Power Supply
19	Function Generator with digital Display
20	OPAMP Trainer Kit

30. DIGITAL & MICROCONTROLLER LAB:

Sr. No.	List of Equipments
1	PIO-OPTO RLY #275 PIO based OPTO relay controller card
2	DYNA-51 #1437 TO #1439 8031/51 based microcontroller trainer with 16X2 LINES LCD display power supply
3	CABLE SET cable set For Dyna-51 order no - SOTE10000216/50
4	DYNA -85-REV-6.0 # 1043 TO # 1050 Low cost intel 8085 microprocessor based trainer kit DYNA-85 -REV-6.0 with 2 no's of IC 8255 order no -SOTE09000404
5	CABLE SET cable set order no -SOTE09000405/20

6	PIO-ADC #2220 PIO based single channel A to D card
8	PIO-DAC #2698 PIO based D to A converter card
9	Easy-8051B Development System for 8051 Microcontroller order no- SOTE10000216/10
10	LEAPER-1 Digital IC Tester order no- SOTE09000405/40
11	LIGHT TO FREQUENCY TSL230BR programmable light to frequency board interfacing with easy 8051B
12	PIO-STEPPER #1886 PIO- based stepper motor controller card order no- SOTE09000404
13	PIO-LCI #834 PIO- based logic interface card order no- SOTE09000404
14	PIO-RT/TC #315 PIO based thermocouple card
15	PIO-STEPPER #1954 PIO- based stepper motor controller card interfacing with Dyna-51
16	PIO-RT/TC #325 PIO based thermocouple card interfacing with Dyna-51
17	PIO-LCI #839 PIO- based logic interface card interfacing with Dyna-51
18	STUDY-TRAFFIC #436 Study card for traffic signal control operation interfacing with Dyna-51
19	STUDY-8279 #1188 Study card for study of 8279
20	STUDY-DCM #726 Study card for DC motor control
21	STUDY-THUMBWHEEL #583 Study card for the study thumbwheel switch interfacing with Dyna-51
22	STUDY-TRAFFIC #447 Study card for traffic signal control operation interfacing with Dyna-51
23	STUDY-8255 #1633 study card for 8255 interfacing with Dyna-51
24	TR-PSU-SMPS01 Power supply SMPS01 for Dyna-85N
25	TR-STP-MOTOR-12V,2Kg
26	TR-PSU-SMPS03 Power supply SMPS03 for interfacing with DCM card
27	TR-PSU-SMPS03 Power supply SMPS03 for interfacing with stepper motor card
28	TR-16X2 LCD 16X2 LCD interfacing with easy 8051B
29	TR-KBD-PS2-SAMWH Samsung PS2 keyboard white with AT converter of LCD kit
30	8051 READY 8051 Ready interfacing with easy 8051B

31. MEASUREMENT & CONTROL LAB:

Sr. No.	List of Equipments
1	Strain gauge
2	DEAD WEIGHT TESTER
3	Rotameter
4	Ventury tube
5	Orifice plate
6	RTD & Thermocouple setup
7	Calibration setup for temp. measurement using RTD & Thermocouple
8	Tachometer
9	Hygrometer
10	Rotary Encoder
11	LVDT
12	DC position control system
13	AC position control system
14	Potentiometer as a error detector
15	Syncho as aerror detector
16	First order R-C filter-741
17	Second order R-L-C filter-741
18	Temperature controller using on-off controller
19	Temperature controller using PI & PID controller

20	Synchro Transmitter & Receiver
21	Delta PLC Model No.DVP-14SS211T
22	Delta Analog Module
23	Selectron made PID controller
24	Temperature sensor PT 100
25	Sciencetech 801c, 30Mhz 2 channel Analog oscilloscope with component tester
26	Sciencetech 4061, 3Mhz Microcontroller based function generator with 40MHz frequency counter
27	Sciencetech DM97 3 & 3/4 handheld multimeter
28	Sciencetech 4077 multiple DC power Supply

32. ADVANCE COMMUNICATION LAB:

Sr. No.	List of Equipments
1	Klystron Power Supply
2	GSM Mobile Trainer kit
3	Cooling Fan
4	Frequency meter
5	H-plane Tee
6	E-plane Tee
7	Directional Coupler
8	Fix Short
9	E-H plane
10	VSWR meter
11	Dell optiplex 330NT intel C20 E4600
12	Sciencetech 801c, 30Mhz 2 channel Analog oscilloscope with component tester

33. MACHINE SHOP:

Sr. No.	List of Equipments
1	Apexcode741mechanics Benchvice
2	3/4" stand drill make with 1/2hp motor
3	K.P.T 13mm hand drill
4	K.P.T hand grinder 4"
5	Double ended bench grinder
6	Angle plate 8"
8	Apex code sg731hinged pipe vice
9	Hand shearing machine
10	V block
11	Cut off machine 14" (dewag)
12	Gas welding torch
13	Telco make gas cutter
14	Best indian make trolley
15	Malik welding machine 300Amp
16	Malik welding machine 200Amp
17	Trolley for gas tank
18	Sand mixer
19	Best Indian Mack power make lathe
20	Face plate 350mm
21	Carrier plate 150mm
22	3 jaw chuck with back plate 200mm
23	Anti vibration mount
24	Revolving center Mt-3
25	Electrical coolant pump with tank
26	Quick change tool post
27	All geared aut lathe height of center 175mm
28	Anti vibration mount

29	3jaw chuck with back plate 200mm
30	Face plate 350mm
31	Carrier plate 150mm
32	Quick change tool post
33	Revolving center Mt-3
34	Electrical coolant pump with tank
35	Milling machine Universal
36	Vertical attachment
37	Milling vice 150mm swivel base
38	Anti vibration mount
39	Dividing Head 4
40	Electrical coolant pump with fittings
41	Radial drilling M/c Cap 40mm,
42	Cast iron box table
43	Drill vice 6
44	Drill chuck with 19mm arbor and sleeve
45	Anti vibration mount
46	Electrical coolant pump with fittings
47	SMT brand all geared shaping machine
48	Shaping vice
49	Surface grinder
50	Permanent magnetic chuck450x150mm
51	Coolant pump with tank& fittings
52	SMT brand Cylindrical Grinder
53	True 3 jaw chuck size 160mm
54	Oxygen gas cylinder
55	Acetylene gas cylinder
56	Argon gas cylinder
57	Co2 Gas cylinder
58	CO2 welding machine
59	TIG welding machine
60	Oxygen Gas pressure regulator
61	Acetylene pressure regulator
62	Power Hack saw machine
63	Oxy Acetylene Gas Welding torch with tip set
64	Oxy Acetylene gas cutting Torch with tip set
65	Digital weighing machine
66	20KVA spot welding machine

34. AUTOMATION LAB:

Sr. No.	List of Equipments
1	Mtab make CNC lathe Flex turn
2	Mtab make CNC milling Flex mill

35. MMC LAB:

Sr. No.	List of Equipments
1	Temperature control using thermal rid switch and bimetal switch
2	Measurement of force and weight using load cell
3	Liquid level measurement by using capacitive transducer system

36. CAD/CAM LAB:

Sr. No.	List of Equipments
1	Desktop Computers
2	Projector
3	Dot matrix Printer

37. TOM LAB:

Sr. No.	List of Equipments
---------	--------------------

1	Models of various governors
2	Models of brakes
3	Models of clutches
4	Models of cams & followers
5	Different mechanisms
6	Dynamometers models
7	Slip & creep of belt drive test rig

38. POWER LAB:

Sr. No.	List of Equipments
1	Solar plate collector
2	Boiler models
3	Thermal conductivity of solid rod
4	Verification of stefam boltsman law
5	Bomb calorimeter
6	Two stage compressor assly & disassly model
7	Refrigeration test rig
8	Model of window air conditioner

39. FMMLAB:

Sr. No.	List of Equipments
1	Bourden pressure Gauge
2	Bernoulis theorem
3	Venturi meter
4	Orifice meter
5	Pipe fitting apparatus
6	Pelton Wheel
7	Centrifugal Pump
8	Reciprocating pump
9	Hydraulic trainer
10	Pneumatic trainer

- COMPUTING FACILITIES:**

Sr. No.	Particulars	Requirements as per Norms		Availability	
1	No of Computer terminals	210		340	
2	Hardware Specification	Pentium-IV		Intel Core (TM) 2 Duo CPU E4600, 2.8GHz 3MB Cache, 1066FSB, RAM-1GB, HDD-160GB	
3	No of terminals of LAN/WAN	-----		LAN 202	
4	Relevant Legal Software	Application System	MS-OFFICE Windows	Application System	MS-OFFICE Windows
5	Peripheral(s)/ Printers			CANON iR 2525 / 2530 UFR II Lt	
6	Internet Accessibility (in kbps & hrs)	56 Kpbs for 12 hours		10Mbps for 24 Hrs. BSNL Wi-Max Network	

- List of facilities available:**

Class Rooms, Tutorial Hall and other Instructional set up available

Particulars	Requirement as per norms	Available in Institute
Class Rooms	21	20
Tutorial Rooms	06	06
Drawing Hall	01	01
Computer Centre	01	01

Library	01	01
Laboratories	36	36
Total	66	65

- **Games & sports facilities:**

Every academic year the college organizes sports activities under gymkhana & students participate in inter diploma sports (IEDSSA) organized at state level.

- **Center Examination Facility:**

Separate examination cell is available in the institute. Total no. of rooms available are 21 each having capacity 30 students.

- **Teaching Learning process:**

Curricula and syllabi for each of the programmes as approved by the MSBTE, as per MSBTE for details visit www.MSBTE.com.

Academic Calendar of the MSBTE available on www.MSBTE.com

- **Softwares/Design Tools**

1. Visual Studio
2. Turbo C
3. Oracle 8.0
4. Microsoft Office 2003/XP/2007 /2010
5. PTC Creo parametric 3.0
6. Autocad 2013

- **Academic Time Table:** Displayed on college notice board.

- **Placement status:** TPO section is available through which Placement activities are held.

- **Admission Procedure:** As prescribed by DTE 80% through CAP and 20% through management.

- **Fee Structure:** As prescribed by the Shikshan Shulk Samiti.

- **Hostel Facility:** 300 capacity for boys & 300 capacity for girls available.

- **Students' assessment of Faculty:**

Students' feedback is taken at the end of each semester and performance appraisal forms are filled by every staff member at the end of each academic year. Confidential reports of staff are maintained on the basis of students' feedback/academic result and staff appraisal.

- **Faculty Profiles:**

Sr. No.	Name of Employee	Designation	Qualification
1	Mr. Khatawkar.P.R	Principal	M.E. Electronics, MBA
2	Mr. Chaudhari J.H.	Lecturer in Mech. Engg. (W/S)	B.E. Mech. DBM, DSM
3	Dr. Kadam S. D.	Lecturer in Chemistry (I/C Head ASH Dept.)	M.Sc. M.Phil. Ph.D.
4	Dr. Thakur P. I.	Lecturer in English	M.A. M.Phil. Ph.D.
5	Mr. Lakal L. M.	Lecturer in Mathematics	M.Sc. B.Ed
6	Mr. Sawant S. T.	Lecturer in Mathematics	M.Sc.
7	Mr. Khavale S. V.	Lecturer in Physics	M.Sc. M.Phil. Ph.D. (Pursuing)
8	Mr. Jagtap A.S.	Lecturer in Physics	M.Sc.
9	Mr. Londhe R.U.	Lecturer in Chemistry	M.Sc. NET
10	Mr. Pawar B.N.	Lecturer in Physics	M.Sc.
11	Mr. Bhamare A.V.	Lecturer in English	M.A. SET. NET
12	Mr. Shinde S.M.	Lecturer in Automobile Engg. (I/C HOD AE)	MBA B.E.
13	Mr. Kulkarni M.D.	Lecturer in Automobile Engg (Academic Coordinator)	M. E.

14	Mr. Korake S.P.	Lecturer in Automobile Engg	M.E.
15	Mr. Tamboli.N.B	Lecturer in Automobile Engg	M.E.
16	Mr. Pawar S.B.	Lecturer in Civil Engg. (I/C HOD CE)	M.E.
17	Mr. Supekar.M.B	Lecturer in Civil Engg.	B.E.
18	Mr. Shinde K.S.	Lecturer in Civil Engg. (Ad-hoc)	B.E.
19	Mr.Nipate K.V.	Lecturer in Civil Engg. (Ad-hoc)	B.E.
20	Mr.Sarvadnye A.M.	Lecturer in Civil Engg. (Ad-hoc)	B.E.
21	Mr.Patange S.P.	Lecturer in Civil Engg. (Ad-hoc)	B.E.
22	Mr. Bhuse S.H.	Lecturer in Computer Engg. (I/C HOD CO)	B.E.
23	Mr. Bankar H. M.	Lecturer in Computer Engg	M.E.
24	Mr. Pawar P.R.	Lecturer in Computer Engg	M.E.
25	Mr. Kamble P.S.	Lecturer in Computer Engg	B.E.
26	Mr. Deokate.S.T	Lecturer in Computer Engg	B.E.
27	Ms.Khabale N.V.	Lecturer in Computer Engg(Ad-hoc)	B.E.
28	Mr. Chikane S.K.	Lecturer in E& TC Engg. (I/C HOD EJ)	M.E.
29	Ms. Taware V.G.	Lecturer in E& TC Engg	B.E.
30	Mrs. Gore R.R.	Lecturer in E& TC Engg	B.E.
31	Mr. Gaikwad A.S.	Lecturer in E& TC Engg	M.E.
32	Mr. Patil.S.S	Lecturer in E& TC Engg	M.E.
33	Ms. Upase T. L	Lecturer in E& TC Engg (Ad-hoc)	B.E.
34	Mr. Malave B.V.	Lecturer in Mech Engg. (I/C HOD ME)	B.E.
35	Mr. Gore R.M.	Lecturer in Mechanical Engg	B.E.
36	Mr. Sawant D.S.	Lecturer in Mechanical Engg	B.E.
37	Mr. Waghmare R.M.	Lecturer in Mechanical Engg	B.E.
38	Mr. Bhujbal.G.V	Lecturer in Mechanical Engg	B.E.
39	Mr. Jadhav.Y.B	Lecturer in Mechanical Engg(I/C TPO)	M.E.
40	Mr. Chandanvandan A. R.	Librarian	M.Sc. M. Lib. SET,NET
41	Mr. Jadhav S .R.	Accountant	M. Com.
42	Mr. Dhekane M. A.	Clerk	M. A.
43	Mr.Kumbhar K.P.	Clerk	B.Com
44	Mr.Kulkarni B.S.	Clerk	B.Com L.L.B

Date: 01/09/2017

Place: Vidyanagari, Indapur.